

Karin Rehnqvist

STREAMS

© KARIN REHNQVIST

for bass cimba

www.karin-rehnqvist.se

Karin Rehnqvist

© KARIN REHNQVIST

57 REHNQVIST

for bass cymbal

www.karin-rehnqvist.se

Karin Rehnqvist

5 strings for bass cimbalom

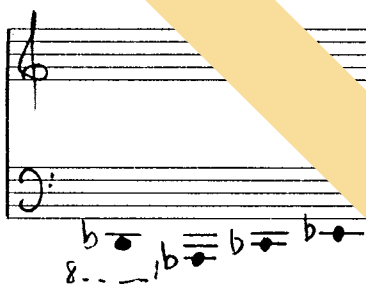
durata 1 min

Bass cimbalom is a string instrument built by

Jonny Axelsson

tuned:

©KARIN REHNQVIST



Composed for "HETLUFT," a sound media performance, which was

www.karin-rehnqvist.se

commissioned by Jenny Carlhäll and Karin Rehnqvist.

Commissioned by Svenska Rikskonsertor

Premiered by Jonny Axelsson at Castor theatre, Södertälje, Sweden 24/10-92.

Strömmar (Streams)

för bascimbalom

av Karin Rehnqvist

♩ = 60

knitting needles

3/4

7/8

knitting needles

mp f ff soft wellet ff mp

♩ = 50

knitting needles

3/4

7/8

3/4

♩ = 60 (harmonic 6)

mp

© KARIN REHNQVIST

♩ = 96

mp

f mp

mp

♩ = 60

3/4

3/8

88

mp

f

p

mp

www.karin-rehnqvist.se

mp

f

p

mp

FERMATO 16 system nr 1

* -undersata toner, med betonet -översata toner med betonet (götter tabl 1-14)

2.

knitting needles

23

mf

mp

28

mf

mp

34

mf

f

39

mf

f

Handwritten musical score for piano, consisting of five systems of staves. The score includes various musical notations such as notes, rests, dynamics (mf, mp, f, p), and articulation marks. A diagonal watermark "© KARIN REHNQVIST" is overlaid across the page. The page is decorated with yellow diagonal stripes.

43

mf mp

5/4 9/8 = 104 4/4

f mp

mf mp

55

f

b7 mf

www.karin-rehnqvist.se

4,

5
4

59/

Musical score system 1, measures 59-62. It features a treble clef and a key signature of one flat. The music includes a triplet of eighth notes in the first measure, followed by various rhythmic patterns. Dynamics include *p*, *mp*, *mf*, and *ff*. A fermata is placed over the final note of the system.

63/

Musical score system 2, measures 63-66. It features a treble clef and a key signature of one flat. The music includes a fermata over the first measure, followed by a series of eighth notes. Dynamics include *mf*, *p*, and *P*. A tempo marking *rit* is present above the first measure. A time signature change to 4/4 is indicated. A tempo marking $\text{♩} = 96$ is present. A performance instruction *Gracile* is written above the staff. The system ends with a fermata.

67/

Musical score system 3, measures 67-70. It features a treble clef and a key signature of one flat. The music includes a series of eighth notes and rests. Dynamics include *p*. A time signature change to 9/8 is indicated.

71/

Musical score system 4, measures 71-74. It features a treble clef and a key signature of one flat. The music includes a series of eighth notes and rests. Dynamics include *p*. A time signature change to 9/8 is indicated.

© KARIN REHNQVIST

75/3/4

4/4

3:2

3:2

♩ = 104

Handwritten musical score system 1. It features a treble clef with a key signature of two flats (Bb, Eb) and a 3/4 time signature. The music includes a triplet of eighth notes in the first measure, followed by a series of chords and eighth notes. A 4/4 time signature is written above the staff, and a 3:2 ratio is indicated above two measures. A tempo marking of ♩ = 104 is present. Dynamics include *mf* and *f*.

♩ = 116

molto enérgico

Handwritten musical score system 2. It continues with a treble clef and a key signature of two flats. The tempo is marked as ♩ = 116. The instruction *molto enérgico* is written above the staff. The music consists of eighth and sixteenth notes. A dynamic marking of *p* is visible at the beginning of the system.

© KARIN REHNQVIST

Handwritten musical score system 3. It continues with a treble clef and a key signature of two flats. The music features eighth and sixteenth notes. A dynamic marking of *f* is present. The copyright notice © KARIN REHNQVIST is written diagonally across the system.

88/

www.karin-rehnqvist.se

Handwritten musical score system 4. It begins with a treble clef and a key signature of two flats. The system number 88 is written at the start. The music includes eighth and sixteenth notes. The website www.karin-rehnqvist.se is printed across the system. Dynamics include *f*.

6.

92/

Handwritten musical notation for measures 92-95. The system consists of two staves. The upper staff is in treble clef and contains a melodic line with eighth and sixteenth notes, including accents and slurs. The lower staff is in bass clef and contains a bass line with dotted notes and slurs.

96/

Handwritten musical notation for measures 96-99. The system consists of two staves. The upper staff is in treble clef and contains a melodic line with eighth and sixteenth notes, including accents and slurs. The lower staff is in bass clef and contains a bass line with dotted notes and slurs.

© KARIN REHNQVIST

107/

Handwritten musical notation for measures 107-110. The system consists of two staves. The upper staff is in treble clef and contains a melodic line with eighth and sixteenth notes, including accents and slurs. The lower staff is in bass clef and contains a bass line with dotted notes and slurs. The word "rit" is written above the upper staff in measures 108 and 109, and "a" is written above the upper staff in measure 110. The word "rit" is also written above the lower staff in measure 109. The word "ff" is written above the lower staff in measure 110.

www.karin-rehnqvist.se

108 rit molto (♩=40) ♩=60

Handwritten musical score for measures 108-111. The top staff is a treble clef with notes and rests. The bottom staff is a bass clef with notes and rests. Handwritten annotations include 'rit molto', '(♩=40) ♩=60', 'b', 'mp', and 'p'.

Handwritten musical score for measures 112-119. The top staff is a treble clef with notes and rests. The bottom staff is a bass clef with notes and rests. Handwritten annotations include '8va', 'mf', 'p', and 'mp'.

© KARIN REHNQVIST

Handwritten musical score for measures 120-121. The top staff is a treble clef with notes and rests. The bottom staff is a bass clef with notes and rests. Handwritten annotations include 'p' and 'mf'.

Handwritten musical score for measures 122-123. The top staff is a treble clef with notes and rests. The bottom staff is a bass clef with notes and rests. Handwritten annotations include 'p' and 'mf'.

www.karin-rehnqvist.se

125/ *rit* ----- $\frac{9}{8}$ ----- $l=l=72$ $\frac{7}{8}$

126/ $\frac{8}{16}$ $\frac{11}{8}$ $\frac{7}{16}$

rit *har* $\frac{3}{8}$ $\frac{3}{4}$

Furioso $\frac{3}{4}$ $\frac{4}{4}$

139/ $\text{♩} = 144$

© KARIN REHNQVIST

143

rit.

♩ = 60

© KARIN REHNQVIST

fingers

soft mallet

156

www.karin-rehnqvist.se

Alto 9/10-92
L. (Rehnqvist)

durata ca. 65 min